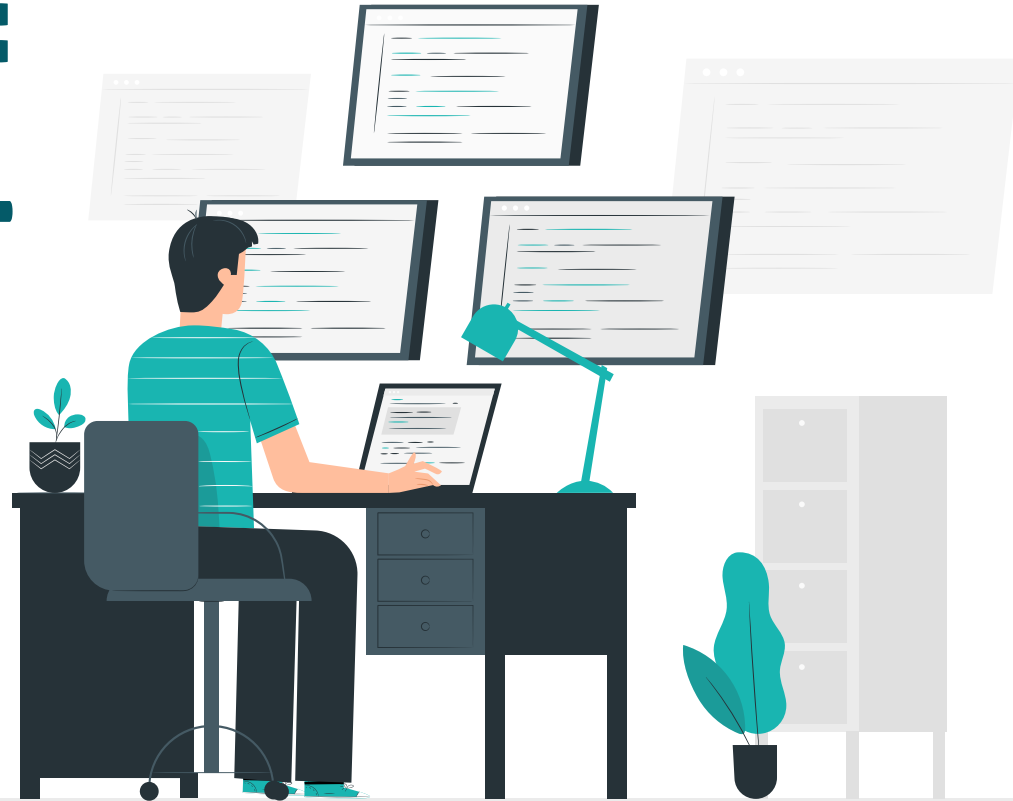


# TECHNOLOGY ACQUISITION: PROJECT MANAGEMENT SOFTWARE

Sindi Bendo, Ryan Ladestro, Mankaran  
Saggi, David Schwartz



# TABLE OF CONTENTS

**01**

**About the Company**

**Research & Risk**

**04**

**02**

**About the Project &  
Business Need**

**Project Software Options**

**05**

**03**

**Project Stages &  
Requirements**

**Implementation &  
Operations**

**06**



## THE COMPANY

Large clothing and outdoor equipment retailer located in Freeport, Maine. They have been around since 1912, providing the Northeast with reliable and protective gear for the cold outdoors. They are slowly expanding, however, hoping to provide clothes and gear for the rest of the world

# ABOUT THE PROJECT & BUSINESS NEED



Adobe® Creative Cloud™



- Creative Department of 100+ users
- Currently using Adobe, Microsoft Suite, Sharepoint, and other systems
- Tasked with finding a comprehensive and intuitive project management software where all programs can intertwine to foster collaboration and productivity
- Ability to view projects that employees are working on along with creating a overall timeline to track the status and development of projects



Project



# PROJECT REQUIREMENTS

01



## Integrability

The ability to integrate with programs such as Microsoft 365 and Adobe Suite

02



## Mark-up Feature

The ability to mark-up and comment on another user's documents

03



## Timeline & Status Checking

The ability to see real-time edits made to documents and status updates

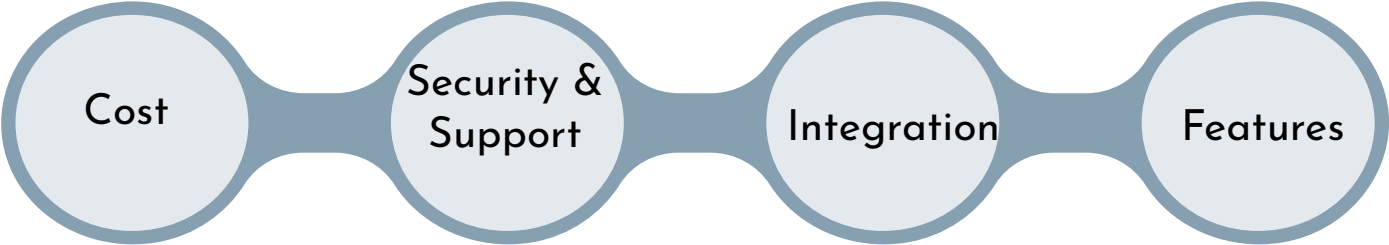


# PROJECT STAGES

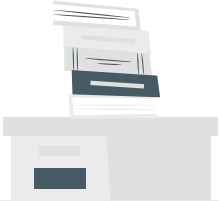
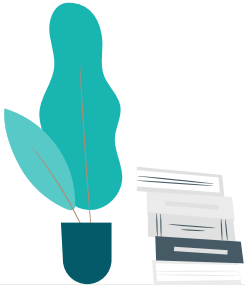


# RESEARCH & RISK

4 Categories:



Likelihood		IMPACT				
		Failure to find a compatible software that fits business needs	Too little options to choose from	Software customization delays execution phase	Vendor offers a high price to purchase the software	Implementation of software fails
		Very Low	Low	Medium	High	Very High
	Almost Certain	Low	Medium	Very High	Very High	Very High
	Likely	Low	Medium	Medium	Very High	Very High
	Possible	Low	Medium	Medium	Very High	Very High
	Unlikely	Low	Low	Medium	Medium	Medium
	Rare	Low	Low	Low	Low	Medium





# Project Online

## Project Plan 1

**\$10.00** user/month

[Buy now](#)

[Try now >](#)

Start quickly and manage projects easily via the web browser.

## Project Plan 3

**\$30.00** user/month

[Buy now](#)

[Try now >](#)

Execute projects with ease with familiar scheduling tools through your choice of the web browser or desktop client.

## Project Plan 5

**\$55.00** user/month

[Buy now](#)

[Try now with a partner >](#)

Optimize your project portfolio to prioritize initiatives and get the results you want through your choice of the web browser or desktop client.

Due to the limit of only being able to view the roadmap and lack of TimeSheet and Resource management, Project Plan 3 and 5 were the only tiers taken into account when calculating the price.





- Mobile and desktop app
- Trusted by over 100,000 teams worldwide
- Over 70+ Integrations!

Basic

\$8

seat / month

Total \$24 / month  
Billed annually

Try for free

For a small team to execute basic work smoothly

Basic Includes:

Forms

Communication with context

Unlimited free viewers

iOS and Android apps

Dashboards  
(1 board per dashboard)

Standard

Most Popular

\$10

seat / month

Total \$29 / month  
Billed annually

Try for free

For a single team to visualize, run, track and improve their work with confidence

Basic features, plus:

Timeline & Calendar views

Guest access

Advanced search

Automations  
(250 actions per month)

Integrations  
(250 actions per month)

Dashboards  
(3 boards per dashboard)

Pro

\$16

seat / month

Total \$48 / month  
Billed annually

Try for free

For teams to streamline and control complex workflows and operations

Standard features, plus:

Private boards

Chart view

Time tracking

Formula column

Automations  
(25,000 actions per month)

Integrations  
(25,000 actions per month)

Dashboards  
(10 boards per dashboard)

Enterprise

Contact Us

For organizations seeking enterprise-grade project and workflow management

Pro features, plus:

Enterprise-scale Automations & Integrations

Enterprise-grade security & governance

Advanced reporting & analytics

Multi-level permissions

Tailored onboarding

Premium support

Dashboards  
(50 boards per dashboard)



- Wrike Integration: 400+ cloud and apps
- Mobile app support
- Mark-up features

## Free

5 users

A simple, shared task list for small teams

\$0 user/month

[Sign Up Now](#)

## Free

- ✓ [Board view](#)
- ✓ [Task Management](#)
- ✓ [File sharing](#)
- ✓ [Real-time Activity Stream](#)
- ✓ [Spreadsheet view](#)
- ✓ [Basic integrations](#) (Google Drive, Dropbox, Box, MSFT Office 365 and OneDrive)
- ✓ [Desktop & mobile apps](#)
- ✓ [Cloud storage integrations](#) (Google Drive, Dropbox, Box, OneDrive)
- ✓ [2 GB of storage space](#)

## Professional

5, 10, 15 users

Full project planning & collaboration

\$9.80 user/month

[Start Free Trial](#)

## Professional

Includes all Free plan features plus:

- ✓ [Task & Subtask Management](#)
- ✓ [Gantt Chart](#)
- ✓ [Advanced Integrations](#) (MS Project, Excel, RSS)
- ✓ [Shareable dashboards](#)
- ✓ [Collaborators](#)
- ✓ [From 5 GB of storage space](#)
- ✓ [From 15 GB of video uploads per month](#)

MOST POPULAR

## Business

5-200 users

Robust work management with customization & exec reporting

\$24.80 user/month

[Start Free Trial](#)

Includes Free Trial of Wrike Proof

## Business

Includes all Professional plan features plus:

- ✓ [Custom fields & workflows](#)
- ✓ [Shared real-time reports with scheduled notifications](#)
- ✓ [Report templates](#)
- ✓ [Graphical analytics](#)
- ✓ [Calendars](#)
- ✓ [Request forms](#)
- ✓ [Project and Task Approvals](#)
- ✓ [Time tracking](#)
- ✓ [User groups & permissions](#)
- ✓ [Salesforce integration](#)
- ✓ [Branded workspace](#)
- ✓ [From 50 GB of storage space](#)
- ✓ [From 15 GB of video uploads per month](#)
- ✓ [Automation Engine](#)

## Enterprise

5-Unlimited

Comprehensive solution with advanced security & controls

[Contact Us](#)

[Start Free Trial](#)

Includes Free Trial of Wrike Proof

## Enterprise

Includes all Business plan features plus:

- ✓ [Active Directory integration](#)
- ✓ [SAML 2.0 Single Sign-On](#)
- ✓ [Two-factor authentication](#)
- ✓ [Password policies](#)
- ✓ [IT controlled admin permissions](#)
- ✓ [User Audit Reports](#)
- ✓ [Network access & compliance policies](#)
- ✓ [Business Intelligence integration](#)
- ✓ [Advanced user access controls](#)
- ✓ [From 100 GB of storage space](#)
- ✓ [From 15 GB of video uploads per month](#)
- ✓ [Automation Engine](#)



# workfront™

- Scenario Planner
- Workfront Fusion
- Native Integrations: Adobe, Sharepoint, Google Suite



## Enterprise

Entire enterprise

Unlimited enterprise solution with advanced security. Includes premium digital content review and approval.

[Request Pricing](#)



## Business

Up to 10 departments

Work management for multiple departments. Includes premium digital content review and approval.

[Request Pricing](#)



## Pro

For one department

Complete work management for your entire department. Includes premium digital content review and approval.

[Request Pricing](#)



## Team

A single team

Basic project and work management to get your team started.

[Request Pricing](#)

# Decision Scoring Matrix

Below is the criteria that our decision was based on:

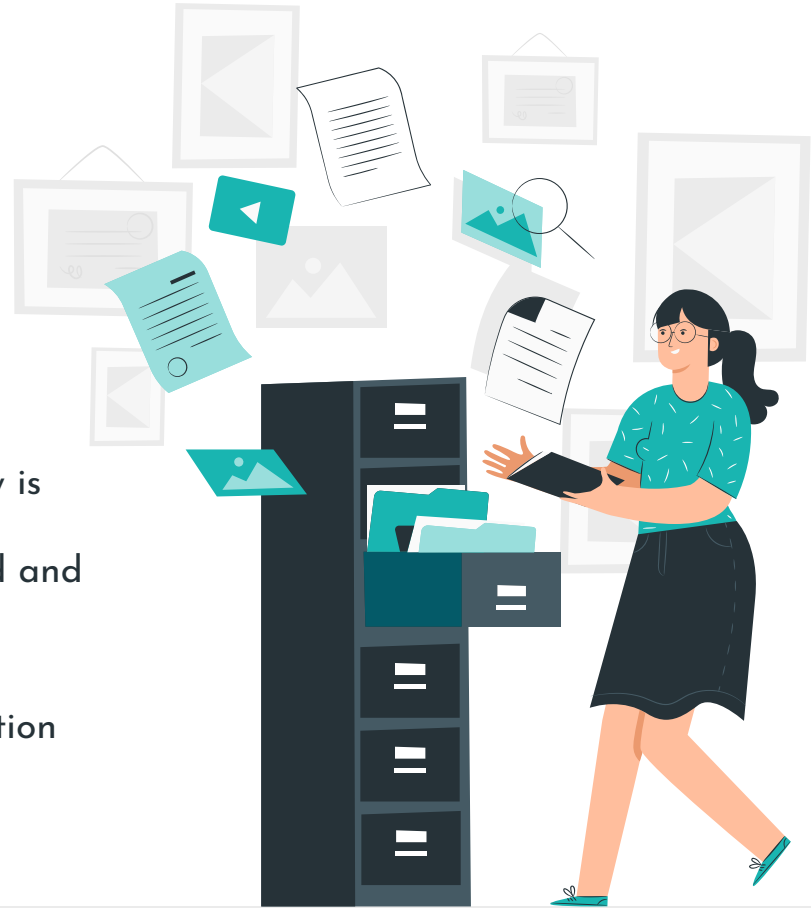
	Attribute	Weight	Options			
			Microsoft Project	Monday	Wrike	Workfront
			Score			
Category						
Cost	Installation	4	3	2	3	2
	Maintenance		3	2	3	3
	Feature Set		2	2	3	3
Integration	Resource Availability	3	2	1	3	3
	Team Familiarity		2	2	3	2
	Ease of Cross-Platform Work		3	3	3	3
Security & Support	Training	2	2	2	3	3
	Customer Service		2	2	3	3
	Overall Project Security		2	2	3	3
Features & Customization	Project Roadmaps	1	2	1	3	3
	Team Collaboration		1	2	3	3
	Inter-Departmental Work		1	2	3	3
Total			25	23	36	34
Weighted Scores			69	59	90	83

Scale:	
	1 Poor
	2 Adequate
	3 Excellent

# OUR FINAL SELECTION:

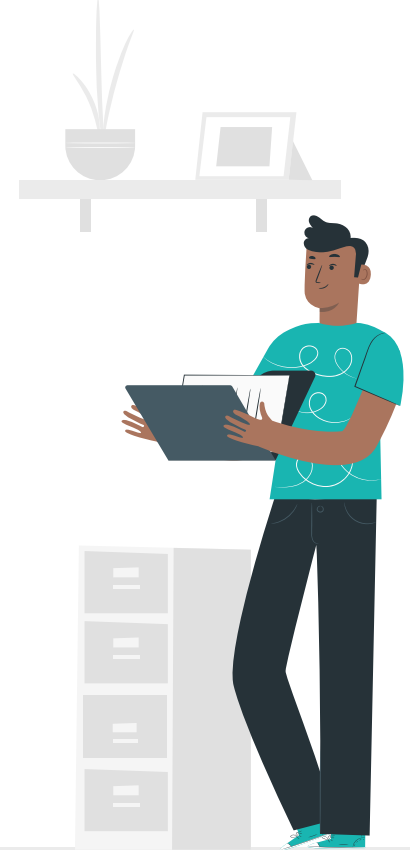
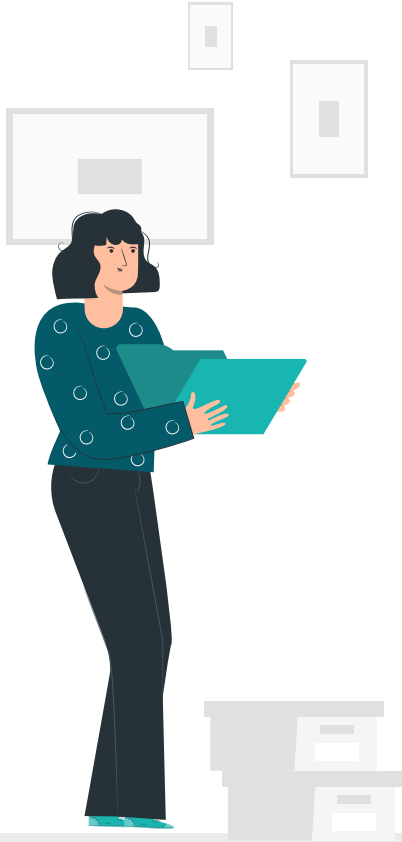
# Wrike

- Fit all of the requirements that the company is looking for
  - Integration with Adobe Creative Cloud and Microsoft Suite
  - Proofing and Document Review Tools
  - Timeline Project Management Integration
  - Overall ease of use and security



# IMPLEMENTATION & OPERATIONS

- Wrike's Plan which is \$28.12 per user per month
- The total cost is below the allocated budget
- Wrike offers end-user support and will assist in any issues throughout the use of the software
- Easy exit-strategy due to monthly payments





# LESSONS LEARNED



## Documentation

Complete binder with  
detailed sections



## Communication

Team Wise & Sponsor  
Wise



## Managerial Processes

Defining, Developing, &  
Approving

# THANK YOU!

Any questions?

Website:

<https://technologyacquisit.wixsite.com/techacquisition>

CREDITS: This presentation template was created by Slidesgo, including icons by Flaticon, and infographics & images by Freepik

